



Prices

Consumer price index (CPI). Annual average (1996)

General index and by groups

	Index Based 1992	Year-to-year change
GENERAL INDEX	119.2	3.6
1. Food	118.2	3.7
2. Clothing	112.5	2.7
3. Housing	123.0	3.8
4. Furniture	114.5	4.3
5. Medicine	117.8	3.7
6. Transport	124.0	3.4
7. Culture	117.8	3.1
	121.5	3.7

Indices for special groups

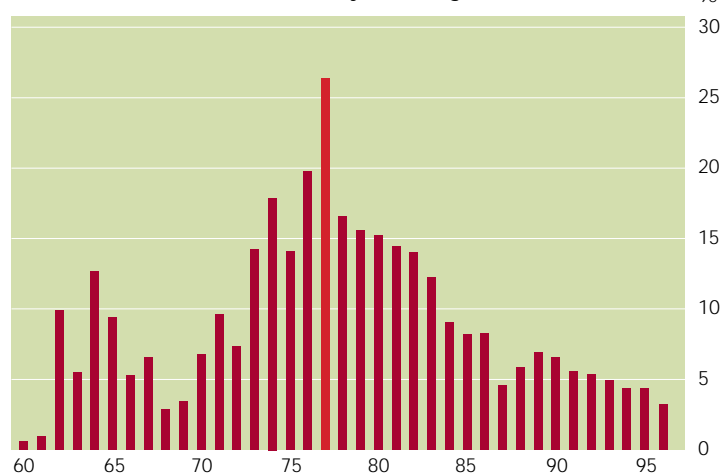
	Index Based 1992	Year-to-year change
Foods	118.2	3.7
- Processed	121.4	4.3
- Non-processed	113.5	2.9
Industrial goods, including:	116.4	3.3
- Consumer durables	118.0	2.5
- Energy products	119.6	3.7
- Fuels	122.1	5.1
GENERAL INDEX		
Not including food	119.6	3.5
Not including energy products	119.2	3.5
Non-processed foods and energy products	120.0	3.6



Harmonised consumer price index (Change Dec. 96 over Dec. 95)

EU	2.1
Germany	1.2
Austria	2.3
Belgium	2.1
Denmark	2.1
Spain	3.3
Finland	1.4
France	1.7
Greece	6.9
Ireland	2.1
Italy	2.9
Luxembourg	1.3
Netherlands	2.0
Portugal	2.9
United Kingdom	-
Sweden	0.5

CPI. General index Year-to-year change (December)



Consumer Price Index (CPI)

The CPI is a statistical survey of the trend in the prices of goods and services consumed by the population living in family dwellings in Spain.

Consumer Price Indices have been obtained as part of Spanish Official Statistics since 1939, and their calculation has passed through five stages (systems with the July 1936 base period and annual averages for 1958, 1968, 1976 and 1983) up to the current system, whose base is the annual average for 1992.

The index is calculated using the **Laspeyres** methodology, where the weights derived from the value of the base year are constant. The basic information about household expenditure on consumer goods and services needed to calculate the weights is taken from the **Household Budget Survey (HBS)** conducted during the period from 1 April 1990 to 31 March 1991. 471 articles (consumer goods and services) are selected from over 900 HBS expense items, the price trend of which represents the trend for all consumer goods and services. This set of goods is commonly referred to as the "shopping basket".

The index is produced from approximately 150,000 prices, taken from information supplied by some 29,000 establishments in 130 municipalities.

Indices are calculated generally and by groups for the country as a whole, the seventeen autonomous communities, the fifty-two provinces and the grouping of Ceuta and Melilla; additionally, indices are calculated for special headings and groups for the country as a whole.

Harmonised Consumer Price Indices (HCPI)

The HCPI is a statistical indicator whose objective is to provide a common measure of inflation by means of which it is possible to make international comparisons and examine compliance in this respect for membership of the European Monetary Union, as set out under the Maastricht treaty.

The HCPI of each country covers the parcels in excess of one thousand of total national shopping basket expenditure. Each member state has had to include or exclude expense items to assure results compatibility.

The reference period for all HCPIs is 1996. The index is calculated using the Laspeyres formula.

EUROSTAT (the European statistical agency) uses the HCPIs to produce a European Union Consumer Price Index as a weighted average of the HCPIs of member countries.

Source INE

Further reading

INE publications:

- *INE figures. Consumer price index. Provisional data* (monthly publication)
- *Consumer price index. Final data. 1992 base period* (quarterly publication)
- *Consumer price index. 1992 base period. Methodology*
- *Consumer price index. Linked series. 1992 base period*
- *Monthly Statistical Bulletin* (monthly publication)
- *Quarterly Bulletin on the Economic Situation* (quarterly publication)
- *Household Budget Survey 1990-1991. Volume I. Principal results*
- *Household Budget Survey 1990-1991. Methodology*
- *TEMPUS data bank: over 34,000 CPI series*
- *INE figures. Harmonised consumer price index. Provisional data* (monthly publication)

Industrial price index. IPRI. Annual average (1996)

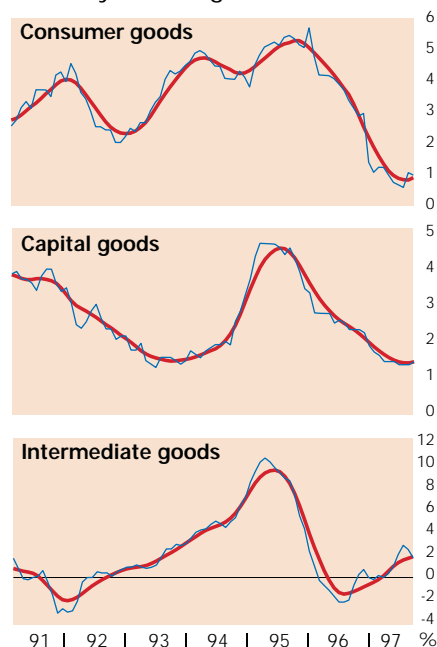
General index and index by branches of industry

	Index. Base period 1990	Year-to-year change
GENERAL INDEX	119.7	1.7
Power	119.4	3.0
Non-energy-bearing minerals and by-products mining and processing. Chemicals industry		
Metalworking industries.	114.2	-2.3
High-precision mechanics	117.9	2.9
Other manufacturing industries	124.1	2.4

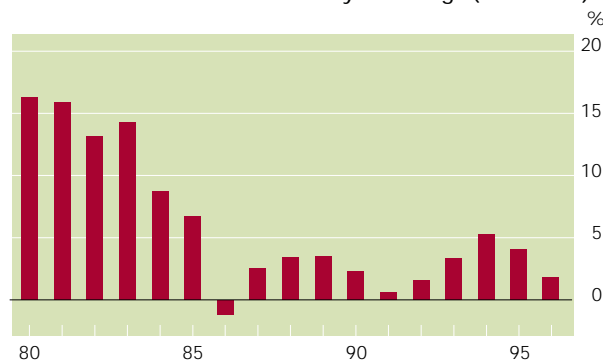
Indices by economic use of goods

	Index. Base period 1990	Year-to-year change
Consumer goods	125.5	3.9
Capital goods	116.0	2.4
Intermediate goods	116.0	-0.5

Year-to-year change and trend



IPRI. General index. Year-to-year change (December)



Industrial Price Index (IPRI)

The IPRI an indicator of the economic situation, whose objective is to measure the month-by-month trend in the prices of the industrial products manufactured and sold within the country. They are ex-works prices that do not include transport expenses, retailer expenses, nor the VAT invoiced by the manufacturer to the customer.

The **1990 base** indices started to be produced in 1991, including a set of methodological innovations and quantitative improvements over the former 1974 base.

The index uses the **Laspeyres** methodology with constant weights for the base year. The weights are calculated depending on the relative size of the branches of industry (by turnover) and products (by production value) in

1990 from the information supplied by the **Industry Survey**.

The information for calculating the indexes is taken from a continuous monthly survey. The scope of the index covers all the industrial sectors (energy, mining and manufacturing), not including building. Around 6,000 establishments are surveyed every month, which provides over 20,000 prices.

Indexes are calculated for industry as a whole and by industrial sectors as per the **National Classification of Economic Activities**. The indexes are also presented by economic use of the goods.

Further reading

INE publications:

- *INE figures. Industrial Price Indices. Provisional data* (monthly publication)
- *Monthly Statistical Bulletin* (monthly publication)
- *Quarterly Bulletin on the Economic Situation* (quarterly publication)
- **TEMPUS** data bank: nearly 6,000 series

Source INE