



Life conditions

Consumer price index (CPI). Annual average 1998

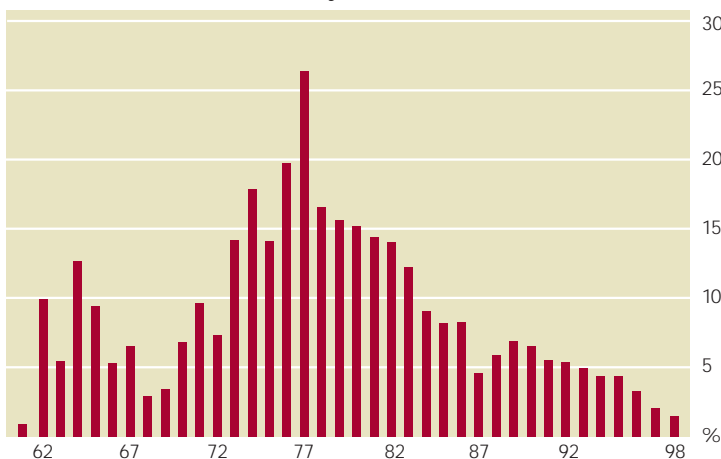
General index and by groups

	Basic Index 1992	Variation in one year
GENERAL INDEX	123,8	1,8
1. Food	120,7	1,7
2. Clothing	117,2	2,1
3. Housing	129,1	1,5
4. Household	118,6	1,7
5. Medicine	125,5	3,3
6. Transports	127,1	0,4
7. Culture	122,2	1,8
8. Others	130,1	3,6

Special groups indices

	Basic index 1992	Variation in one year
Food	120,7	1,7
- Processed	123,3	1,3
- Non-processed	116,9	2,1
Industrial goods, among them:	119,1	0,5
- Consumer goods	120,5	0,9
- Energy products	117,8	-3,8
- Fuels	121,3	-4,2
GENERAL INDEX		
Food excluded	125,1	1,9
Energy products excluded	124,3	2,3
Non-processed food and energy products excluded	125,3	2,3

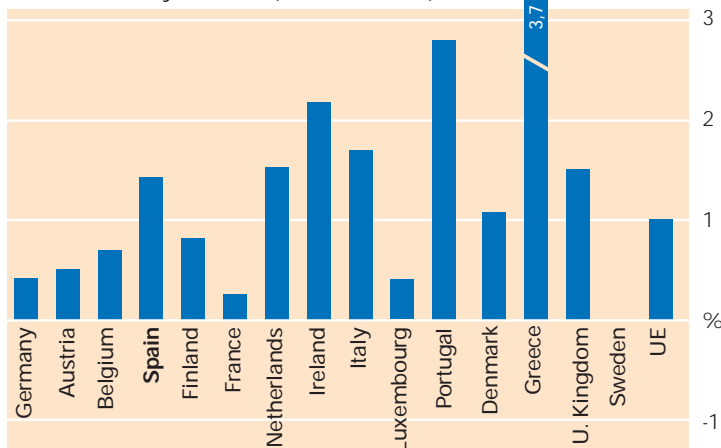
CPI. General index. Annually variation (in December)



For further information:

- INE figures. Consumer price index. Provisional data (monthly publication).
- Consumer price index. 1992. Base period. Methodology.
- Consumer price index. Linked series. 1992 base period.
- Monthly Statistical Bulletin (monthly publication).
- TEMPUS data bank: over 34,000 series CPI series.

HCPI. Annually variation (December 1998)



Harmonized consumer price index (HCPI)
Annually variation

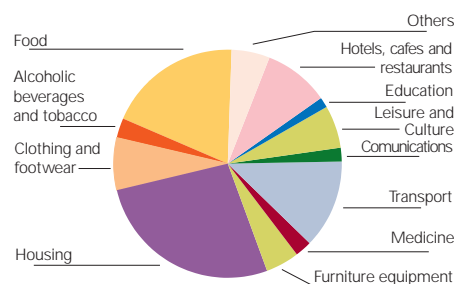
	Dec.97 to Dec. 98	Dec.98 to Dec.97	Jul.99 to Jul.98
UE (p)	1,6	1,0	1,1
Germany	1,4	0,4	0,6
Austria (p)	1,0	0,5	0,3
Belgium	0,9	0,7	0,7
Denmark	1,7	1,1	2,0
Spain	1,9	1,4	2,1
Finland	1,6	0,8	1,4
France	1,2	0,3	0,4
Greece	4,5	3,7	1,8
Ireland	1,0	2,2	1,9
Italy	1,8	1,7	1,7
Luxembourg	1,5	0,4	-0,3
Netherlands	2,2	1,5	1,8
Portugal	2,1	2,8	1,9
U. Kingdom	1,8	1,5	1,3
Sweden	2,7	0,0	0,2

(p) Provisional data

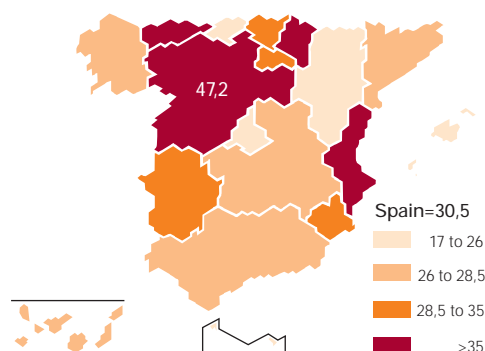
Annual household expenditure. 1998

Group of items of expenditure	Total expenditures (million pesetas)	Average expenditure (thousands pesetas)	
		Per household	Per capita
TOTAL	35.129.775	2.907,4	898,3
Food and non-alcoholic beverages	6.761.874	559,9	173,0
Alcoholic beverages and tobacco	953.057	78,9	24,4
Clothing and footwear	2.558.394	211,8	65,5
Housing	9.458.017	783,1	242,0
Furniture equipment	1.710.673	141,7	43,8
Medicine	848.426	70,3	21,7
Transport	4.355.472	360,8	111,4
Communications	680.614	56,4	17,4
Leisure and Culture	2.156.194	178,5	55,2
Education	531.432	44,0	13,6
Hotels cafes and restaurants	3.281.461	271,7	84,0
Others	1.834.160	151,9	46,9

Percentage breakdown of household expenditure



Percentage of households that can dedicate some money for saving according to their level of incomes and expenditures. 1st quarter 1999



For further information:

- Household Budget Survey. Methodology
- Household Budget Continuous Survey. Base 1997
- Household Budget Continuous Survey. Definitive results. 1998

Annual household expenditure

	Average expenditure per household (thousands pesetas)	Average expenditure per capita (thousands pesetas)	Index on the average of the average expenditure per capita
SPAIN	2.907,4	898,3	100
Andalusia	2.629,0	754,9	84
Aragon	2.836,2	955,0	106
Asturias (Princ. of)	2.896,5	945,2	105
Balearic (Islands)	2.886,6	1.000,0	111
Canary Islands	2.864,9	835,1	93
Cantabria	2.906,0	876,2	97
Castilla & León	2.601,9	854,4	95
Castilla-La Mancha	2.440,3	754,1	84
Catalonia	3.134,7	1.016,8	113
Comm. of Valencia	2.599,9	850,9	95
Extremadura	2.240,3	685,6	76
Galicia	2.695,1	796,2	89
Madrid (Comm. of)	3.782,0	1.148,3	128
Murcia (Region of)	2.558,9	741,5	83
Navarre (Comm. of)	3.820,9	1.155,2	129
Basque Country	3.048,1	925,3	103
Rioja (La)	2.933,6	919,8	102
Ceuta & Melilla	3.416,8	918,4	102