



# Industry and Energy

## Industrial companies survey (1995)

	Employees	Turnover <sup>1</sup>	Consumption <sup>1</sup>	Staff costs <sup>1</sup>
<b>TOTAL</b>	2,322,694	46,058,520	27,145,094	8,053,378
Mining and petroleum	56,992	2,024,202	1,329,047	275,701
Food, drinks and tobacco	372,925	9,126,332	6,164,206	1,114,099
Textile, clothing, leather and footwear industry	277,013	2,897,751	1,751,253	595,756
Wood and cork	89,911	899,467	533,174	185,362
Paper, publishing, graphic arts and recorded media reproduction	162,347	2,951,661	1,479,822	582,851
Chemical industry	130,027	4,204,242	2,329,230	704,589
Rubber and plastics				
Miscellaneous non-metallic mineral products	156,436	2,305,852	1,005,998	508,913
Metallurgy and metal manufacturing	305,370	4,893,677	2,784,805	1,007,339
Machinery and mechanical plant	142,556	2,098,293	1,161,810	535,713
Electrical, electronic and optical supplies and equipment	135,718	2,718,468	1,562,335	599,080
Transport supplies	190,037	5,562,477	3,903,492	837,157
Other manufacturing industries	139,681	1,247,983	656,782	320,444
Energy and water	68,067	3,476,118	1,574,660	433,510

1 million pesetas

**Turnover** includes sales and services provided by the company.

### Industrial Companies Survey

Its main objective is to supply information about the principal structural characteristics and activity of the different branches of industry in the economy.

The principal variables surveyed are: employees, turnover, operating costs, investment, etc. The results are broken down by region and branch of industry.

It is a continuous survey conducted annually. It has been carried out since 1993 nation-wide, excepting Ceuta and Melilla.

Its basic unit is the industrial company. The population scope covers all companies with one or more paid employee, whose principal activity falls within any of the following: mining, manufacturing and production and distribution of electricity, gas and water.

Companies with 20 or more employees are surveyed exhaustively, whereas companies employing under 20 persons are sample surveyed. A total of 40,000 businesses are surveyed every year.

Source INE

### Further reading

#### INE publications:

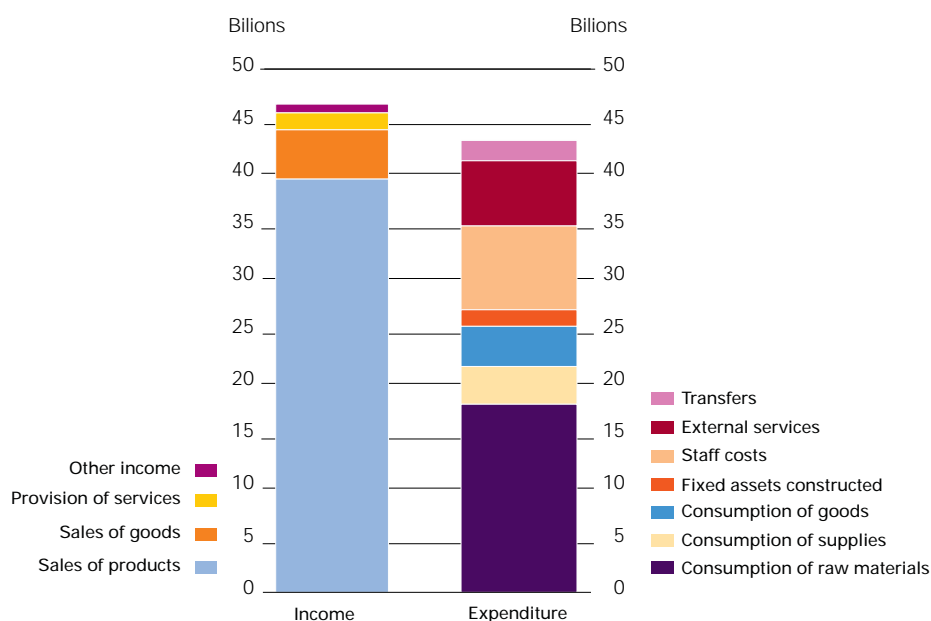
- *Industrial Companies Survey* (annual publication)
- **TEMPUS** data bank: 4,500 series

### Industrial companies survey (1995)

	Employees	Turnover <sup>1</sup>	Consumption <sup>1</sup>	Staff costs <sup>1</sup>
<b>SPAIN</b>	2,322,694	46,058,520	27,145,094	8,053,378
Andalusia	210,983	4,211,669	2,704,227	633,394
Aragon	88,146	2,165,763	1,360,597	302,954
Asturias (Principality of)	64,544	1,208,645	666,478	266,231
Balearic Islands	24,618	309,087	153,426	68,148
Canary Islands	35,142	629,583	349,218	105,209
Cantabria	30,520	662,358	370,284	123,883
Castile and Leon	135,347	2,883,008	1,742,235	478,624
Castile-La Mancha	94,061	1,604,023	1,011,673	243,146
Catalonia	570,257	11,876,365	6,828,097	2,141,326
Comm. of Valencia	301,300	4,950,193	2,901,990	853,538
Extremadura	23,833	326,685	203,746	52,374
Galicia	134,134	2,581,906	1,552,846	394,757
Madrid (Comm. of)	270,598	5,902,911	3,330,884	1,130,326
Murcia (Region of)	58,122	903,810	587,775	138,643
Navarre (Comm. of)	56,401	1,342,531	832,033	215,080
Basque Country	197,368	4,011,794	2,262,670	823,323
Rioja	27,322	488,190	286,914	82,423

<sup>1</sup> Million pesetas

### Breakdown of income and expenditure (1995)



## Industry and Energy

### Industrial products survey (1995)

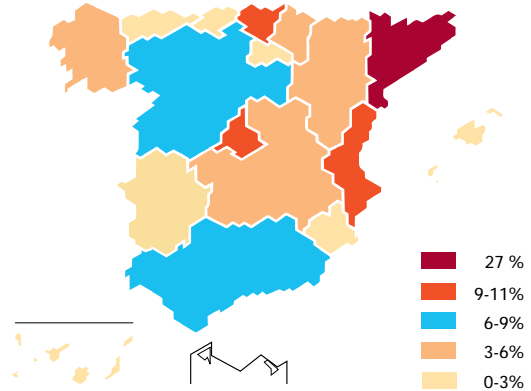
Value of industrial output by groups of activity

C.N.A.E.		Million Ptas.	Percentages
	<b>TOTAL</b>	<b>29,402,306</b>	
15-16	Food, drinks and tobacco	6,535,533	22%
17-18	Textile and clothing	1,425,121	5%
19	Leather and footwear	458,906	2%
20	Wood and cork	452,905	2%
21-22	Paper, graphic arts and publishing	2,035,720	7%
24	Chemical industry	3,112,840	11%
25	Rubber and plastics manufacturing	1,228,321	4%
26	Non-metallic mineral products	1,756,582	6%
27	Metal production, working and foundry	1,913,856	7%
28	Metal products	1,591,540	5%
29-30-33	Machinery and equipment, optical and similar systems	2,025,471	7%
31-32	Electrical and electronic supplies	1,408,801	5%
34-35	Transport supplies	4,581,229	16%
36	Other manufacturing industries	875,480	3%

### Industrial output (million pesetas)

<b>SPAIN</b>	<b>29,402,306</b>
Andalusia	2,450,505
Aragon	1,576,228
Asturias (Principality of)	745,914
Balearic Islands	134,253
Canary Islands	277,618
Cantabria	469,359
Castile and Leon	2,168,634
Castile-La Mancha	949,301
Catalonia	7,998,265
Comm. of Valencia	3,154,495
Extremadura	145,093
Galicia	1,531,876
Madrid (Comm. of)	3,112,399
Murcia (Region of)	512,933
Navarre (Comm. of)	1,122,577
Basque Country	2,706,004
Rioja	346,853

### Breakdown of product value



#### Industrial Products Survey

Its objective is to ascertain output (amount and value) of the different industrial goods.

It is a continuous, annual survey covering the whole country, except Ceuta and Melilla. The information unit is the industrial establishment.

The population scope covers over 35,000 industrial establishments. The information surveyed is defined using the PRODCOM list, which contains over 5,000 industrial products and services. This list is harmonised with the Foreign Trade Classification or Combined Nomenclature.

It has been conducted since 1993, the year in which Spain started to adapt to the PRODCOM (COMMunity PRODUCTION) Regulation, regarding the harmonisation of industrial production statistics in European Union countries, compulsory as of 1995.

Source INE

#### Further reading

INE publications:

- *Industrial Products Survey* (annual publication)

**Industrial products survey (1995)**

Principal outputs

Units	Name	Amount	Value (million Ptas.)
Tonnes	Fresh or frozen beef, carcasses or half carcasses	353,079	86,279
Tonnes	Fresh or frozen pork, carcasses or half carcasses	672,432	71,981
Tonnes	Fresh or frozen whole or jointed pork hams (on the bone), and shoulder	486,210	109,795
Tonnes	Fresh or frozen whole chickens	820,546	139,572
Tonnes	Cured, salted or smoked whole or jointed pork hams (on the bone) and shoulder	115,961	87,370
Tonnes	Raw, cooked, smoked or tinned cold meats, sausages and similar products	343,223	185,939
Tonnes	Unfrozen, vinegar or acetic acid-free preserved olives	248,369	68,183
Tonnes	Seed or oil-bearing crop flour or paste	2,424,786	66,111
Tonnes	Wheat flour or mixed flour	2,466,359	105,813
Tonnes	Feed produced for farm animals: pigs	4,889,707	174,789
Tonnes	Feed produced for farm animals: cows, sheep, goats	4,251,058	144,921
Tonnes	Feed produced for farm animals: poultry	3,460,128	124,713
Tonnes	Solid white sugar: beet	1,156,714	135,168
Hectolitres	Malt beer	25,396,036	276,925
Thousands	Cigarettes made with tobacco	48,555,790	104,197
Pairs	Formal footwear with leather uppers, for men	24,406,817	62,422
Pairs	Formal footwear with leather uppers, for women	40,520,494	95,558
Units	Wooden doors, frames and thresholds	18,744,196	81,376
Tonnes	Paper or corrugated cardboard, including perforated products	573,651	56,553
Tonnes	Paper or corrugated cardboard boxes	1,709,124	215,312
Tonnes	Padded cellulose nappies and similar sanitary articlescelulosa for babies and adults	104,009	50,754
Units	Dictionaries and encyclopaedias, included collections	90,280,955	76,718
Units	Newspapers and periodical publications, published at least four times per week	1,640,497,169	145,750
Units	Newspapers and periodical publications, published less than four times per week	800,696,630	92,476
Tonnes	Polypropylene in original state	386,506	53,360
Thousands	Plastic carboys, bottles, flasks and similar articles with a capacity of <= 2 litres	4,845,101	58,230
Thousand m <sup>2</sup>	Glazed ceramic paving stones and coverings, the maximum surface area of which is larger than a square with < 7 cm sides; stoneware surface area 90 cm <sup>2</sup>	147,090	123,452
Tonnes	Portland cement (except white)	24,158,271	218,525
Tonnes	Bars for concrete	2,622,192	120,542
Units	Petrol-fuelled vehicles, with a cylinder capacity greater than 1,000 cm <sup>3</sup> and less than or equal to 1,500 cm <sup>3</sup> for the transport of < 10 passengers	1,161,091	1,134,974
Units	Petrol-fuelled vehicles, with a cylinder capacity greater than 1,500 cm <sup>3</sup> and less than or equal to 3,000 cm <sup>3</sup> for the transport of < 10 passengers	337,292	467,157
Units	Diesel vehicles, with a cylinder capacity greater than 1,500 cm <sup>3</sup> and less than or equal to 2,500 cm <sup>3</sup> for the transport of < 10 passengers	518,763	667,041

## Industry and Energy

### Index of industrial production. IPI. Annual average (1996)

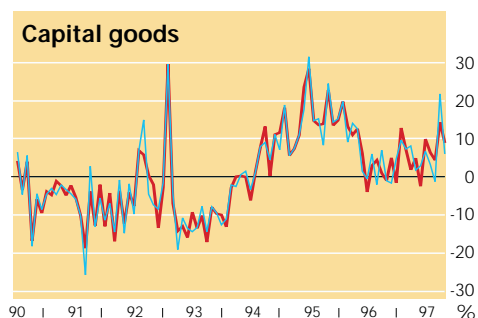
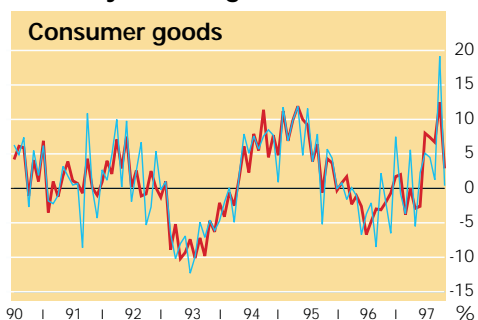
#### General index and by branches of industry

	Index, Base period 1990	Year-to-year change
<b>GENERAL INDEX</b>	102.2	-0.7
Energy	99.7	-0.5
Non-energy-bearing mineral and by-product mining and processing		
Chemical industry	104.7	-2.0
Metal working industries.	108.8	2.3
High-precision mechanics		
Other manufacturing industries	96.7	-2.6

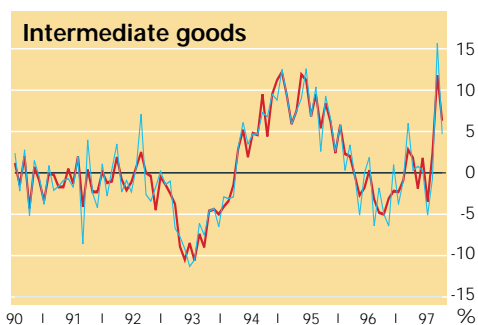
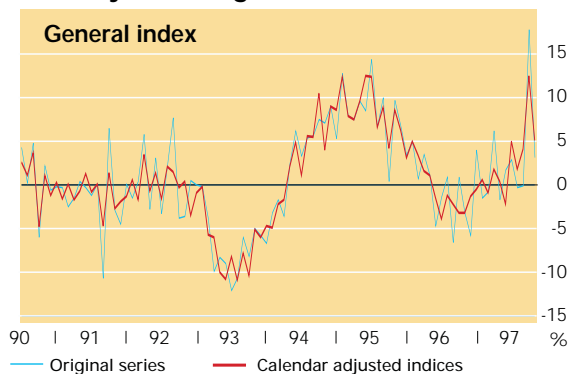
#### Indices by economic use of goods

	Index. Base period = 1990	Year-to-year change
Consumer goods	101.1	-1.5
Capital goods	103.9	3.0
Intermediate goods	102.4	-1.2

#### Year-to-year change



#### Year-to-year change



40

#### Indices of industrial production (IPI)

These are indicators of the economic situation, whose objective is to measure the short-term trend in the production volume of industry.

The 1990 base indices started to be produced as of 1991, including a set of methodological innovations and quantitative improvements over the 1972 base indices.

In line with international practices, the indices employ the Laspeyres methodology with constant weights for the base year, which is 1990. The weights are calculated according to the relative importance of the branches of industry (based on value added) and of the products (by value of production) in 1990, according to information supplied by the Industry Survey.

The information for calculating the indices is obtained from a continuous monthly survey targeting industrial establishments. There are over 9,000 industrial establishments in the sample, and information is gathered on over 980 products, representative of all branches of industry; about 20,000 primary data are collected.

The indices are calculated for industry as a whole and for the industrial sectors as per the National Classification of Economic Activities. The indices are also presented by economic use of the goods.

Calendar adjusted indices are also published for the general index and the consumer goods, capital goods and intermediate goods indices. Calendar adjustments are made to account for the number of working days and holidays in each autonomous

community and be able to make standardised comparisons between different months and years.

Source INE

#### Further reading

##### INE publications:

- *INE Figures- Indices of Industrial Production. Provisional data* (monthly publication)
- *Monthly Statistical Bulletin* (monthly publication)
- *Quarterly Bulletin on the Economic Situation* (quarterly publication)
- **TEMPUS** data bank: over 6,000 series.

## Primary energy (1996)

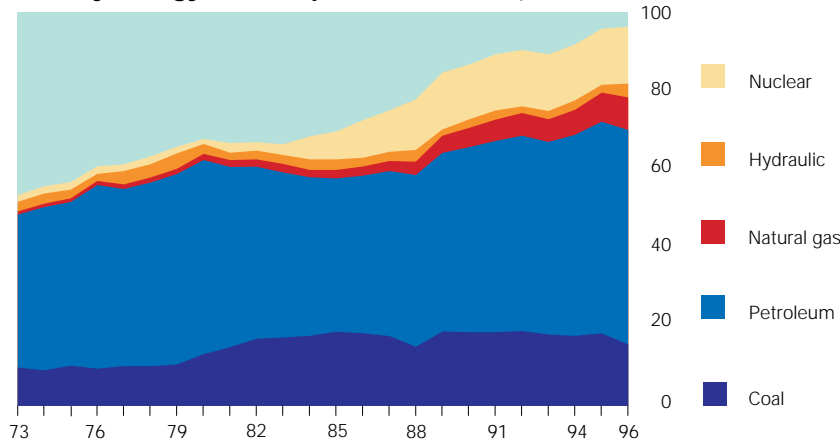
kpet

	Con- sump- tion	Production	Self- sufficiency
<b>TOTAL</b>	<b>97,927</b>	<b>28,954</b>	<b>29.6</b>
Coal	15,547	9,568	61.5
Petroleum	55,433	519	0.9
Natural gas	8,401	413	4.9
Nuclear	14,680	14,680	100.0
Hydraulic	3,506	3,506	100.0
Others	269	269	100.0

The energy balances are expressed in **petroleum-equivalent tons (pet)**, which is a common unit. One pet is defined as  $10^7$  kcal.

The usual units of measurement are converted to pet on the basis of the lowest calorific values of each fuel.

## Primary energy consumption (thousand kpet)

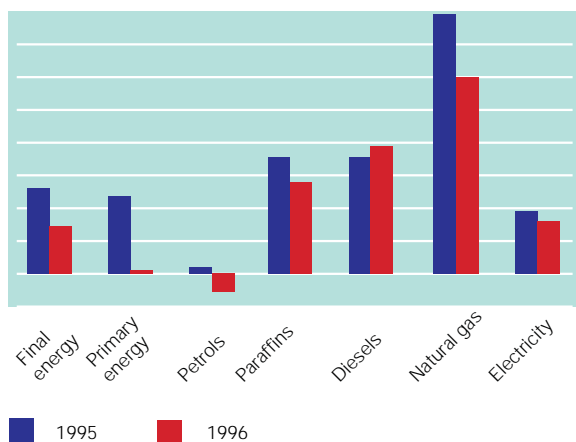


### Primary energy production (1993) (thousands kpet)

EU	674.8
Germany	145.2
Austria	10.5
Belgium	10.7
Denmark	12.2
Spain	28.6
Finland	11.3
France	105.7
Greece	7.5
Ireland	3.4
Italy	27.6
Netherlands	67.3
Portugal	0.9
United Kingdom	215.3
Sweden	28.9

## Energy consumption indicators

Year-to-year change



## Final energy consumption (1996)

<b>TOTAL</b>	<b>70,751</b>
Coal	2,464
Petroleum products	48,107
Paraffins	3,487
Unleaded petrols	3,273
Other petrols	6,393
Diesel A+ B	15,385
Diesel C	3,807
Fuel oil	2,994
Naphtha	3,855
Other products	8,913
Gas	7,325
Electricity	12,856